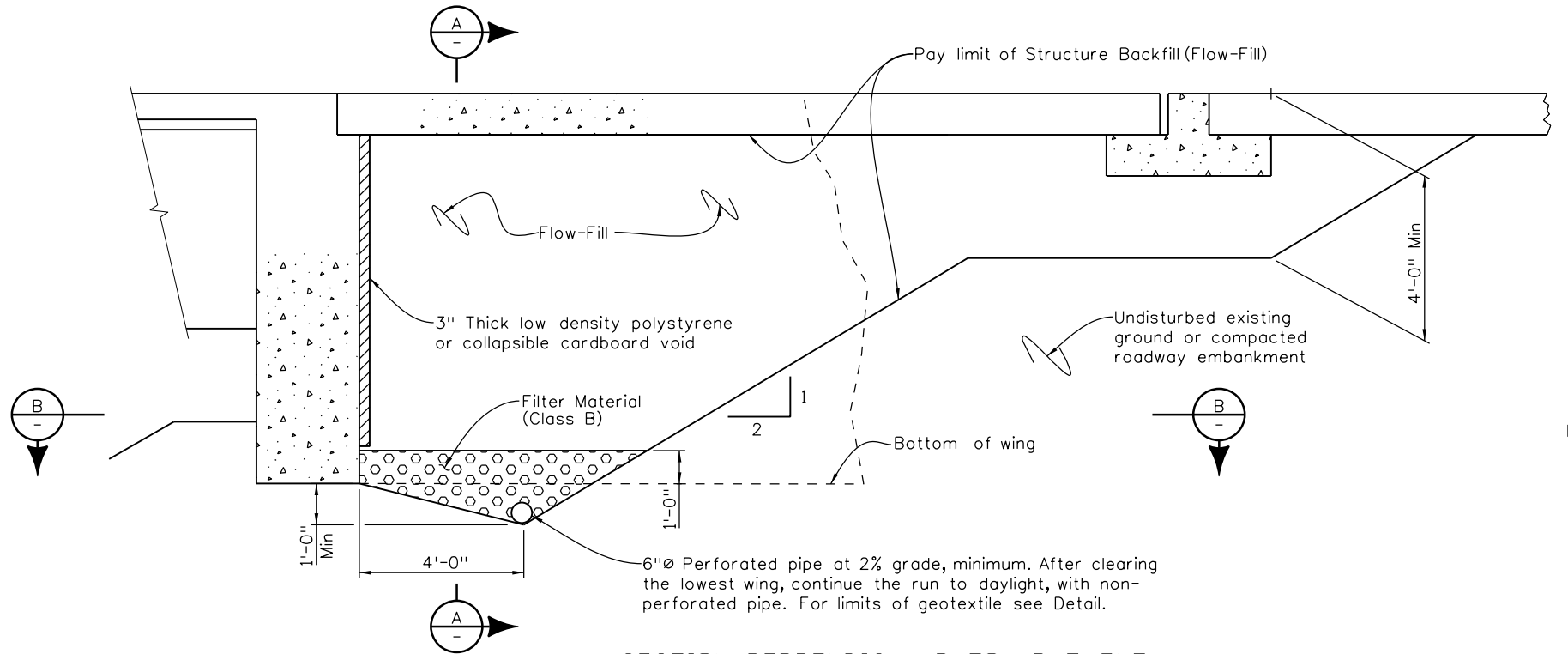


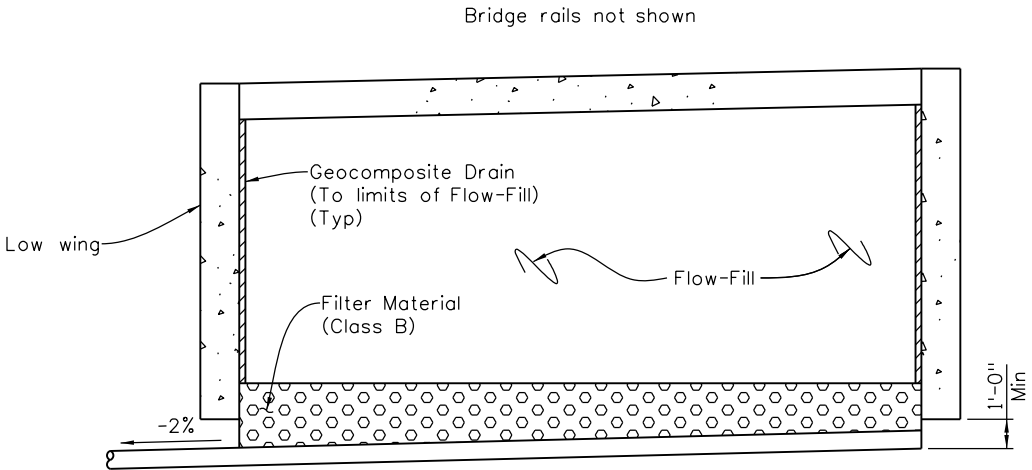
Revision Dates	3/23	9/24
5/00	3/02	3/07
5/01	7/10	10/13

INITIALS	DESIGN	DATE	DETAIL	DATE	QUANTITY	DATE
By						
Checked By						

B-206-F1  
(Use with M-206-2)



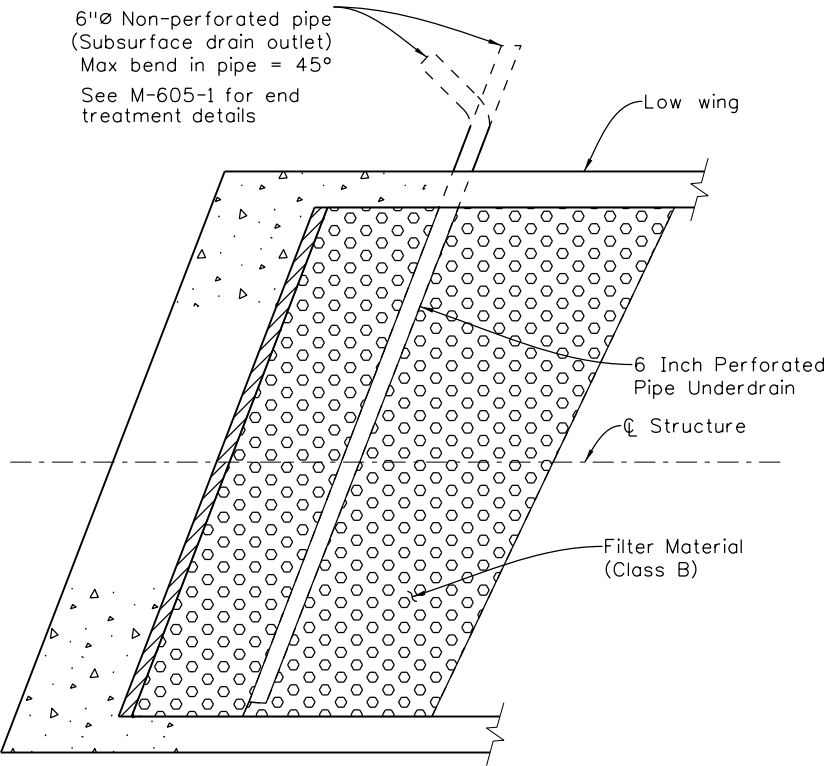
SECTION PERPENDICULAR TO ABUTMENT



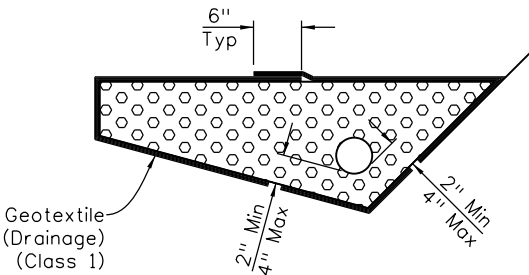
SECTION A-A

Designer/Detailer: Update to show phasing as required.

Designer/Detailer  
Discharge into erosion protection (such as riprap or energy dissipators) as needed. Extend and support non-perforated pipe such that a minimum 6" clearance remains below flowline.



SECTION B-B



6 INCH PERFORATED PIPE UNDERDRAIN

6 Inch Perforated Pipe Underdrain includes all Filter Material (Class B) and Geotextile (Drainage) (Class 1) surrounding the Filter Material (Class B)

NOTES:

- The maximum lift thickness for Structure Backfill (Flow-Fill) shall be 3 feet. Additional layers shall not be placed until the Structure Backfill (Flow-Fill) has lost sufficient moisture to be walked on without indenting more than 2 inches.
- Payment will be made under Item 206 Structure Backfill (Flow-Fill) and shall include the cost for polystyrene or cardboard void, Geocomposite Drain, 6 Inch Perforated Pipe Underdrain, and Subsurface Drain Outlet (6" non-perforated pipe).
- Installation of Pipe Underdrain, Subsurface Drain Outlet, and Geocomposite Drain will conform to the Construction requirements of Section 605.03, 605.06 and 605.04, respectively.

All seals for this set of drawings are applied to the cover page(s)

Print Date: \$DATE\$
File Name: Sheet_B-206-F1.dgn
Horiz. Scale: As Noted Vert. Scale: As Noted
Unit Information Unit Leader Initials

Sheet Revisions

Date:	Comments	Init.

Colorado Department of Transportation



2829 West Howard Place, 3rd Floor  
Denver, CO 80204  
Phone: 303-512-4079  
FAX: 303-757-9197

Staff Bridge Branch

Initials

As Constructed

No Revisions:

Revised:

Void:

STRUCTURE BACKFILL  
(FLOW-FILL)

Designer: XXXXXXXX

Detailer: XXXXXXXX

Sheet Subset: BRIDGE

Structure Numbers

X-XX-XX

X-XX-XX

Subset Sheets: BXX of XXX

Project No./Code

Project Number

Code

Sheet Number